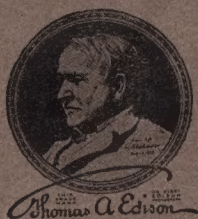


EDISON DIAMOND DISC PHONOGRAPHS



THOMAS A. EDISON, Inc.

ORANGE, N. J., U. S. A.

INSTRUCTIONS

for

Setting Up *and* Operating Models

EARLY ITALIAN—ADAM (*Hand Decorated*)
LOUIS XIV—SHERATON INLAID
CHIPPENDALE—WILLIAM *and* MARY
JACOBES—SHERATON—HEPPELWHITE
CHIPPENDALE CONSOLE
WILLIAM *and* MARY CONSOLE
BABY CONSOLE—LONDON CONSOLE
LONDON UPRIGHT—LONDON No. 2
LONDON No. 1

NOTICE—THIS Instruction Book is furnished
as a guide to Edison Owners. Dealers will please
see that it is not removed from the instrument.

INTRODUCTION AND GENERAL INFORMATION

DO not play the phonograph at very high or very low speeds, all Edison Diamond Disc Records are recorded at the uniform speed of 80 revolutions per minute and should be played at that speed to obtain the correct pitch and correct interpretation of the selection.

The location of the phonograph itself, in your home, should be carefully selected.

Again care must be taken that the phonograph rests on a steady, level surface.

If the surface is not level or the phonograph is unsteady, it may cause the instrument to repeat notes or act in some other unsatisfactory manner.

Should any parts of the instrument be in need of adjustment or repair, refer the matter to your dealer. Do not return any parts direct to factory.

The care of the Reproducer itself is very important; keep the Diamond Point free from dust collected from Records. This may be easily done with the tip of the finger.

Keep the Records free from dust and dirt.

TO SET UP PHONOGRAPH

By carefully following these instructions, at the same time checking off each operation as completed, you will avoid all unnecessary difficulties and will obtain the proper results from your phonograph.

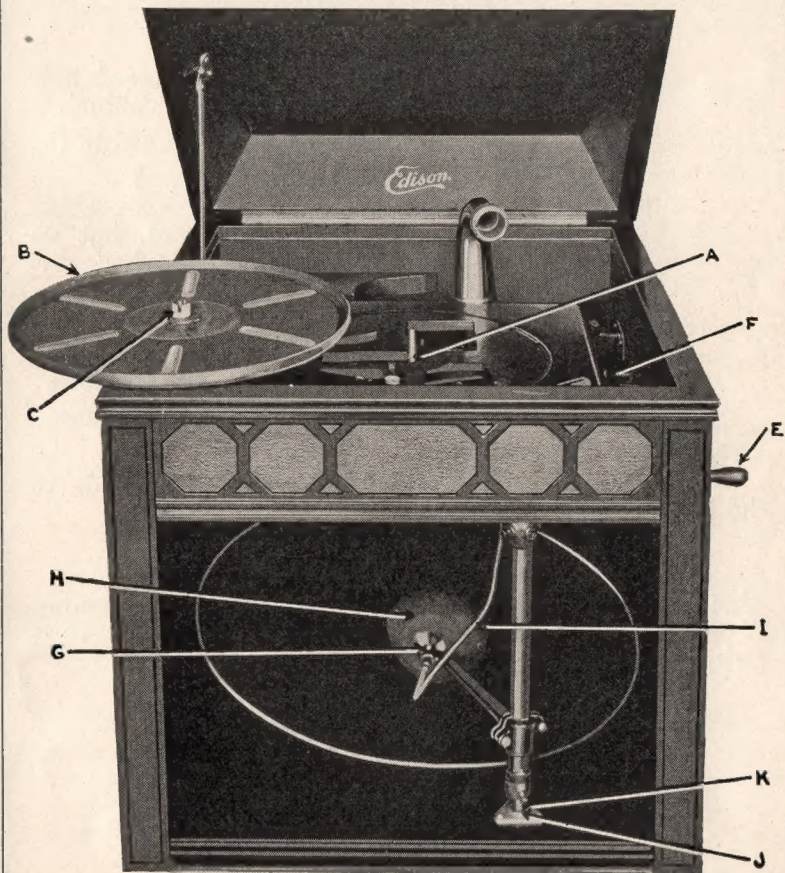


Fig. 1

Refer to Fig. 1.

TURN-TABLE

1. Attach the turn-table as follows:
 - (a) Carefully clean, with a piece of cheese cloth, turn-table spindle (A), and the spindle socket (C), in under side of turn-table (B). Any dust or grit on either of these parts may cause the turn-table to run out of true.

- (b) Place turn-table (B) on spindle (A) so that the slots in socket (C) engage the pin in spindle (A), and press down lightly on turn-table to insure a tight fit.

WINDING CRANK

2. Attach winding crank as follows:
- (a) Insert end of crank (E) into the crank hole provided in the right side of the cabinet.
 - (b) Turn crank until it becomes attached to the winding stem (F).
 - (c) Continue to turn crank in same direction until phonograph is fully wound, but do not overwind. Stop winding when due resistance is felt.

tone MODULATOR

The operation of the Tone Modulator is as follows:

1. To make tone soft, push the tone modulator slide (T. M. Fig. 5) toward the right.
2. To make tone full, or loud, push the slide to the left.

GRILL

To put front grill into the cabinet insert the upper edge of grill first into its slot at the top of front opening of cabinet. Push up the grill as far as it will go and then swing in lower edge and drop into the bottom slot.

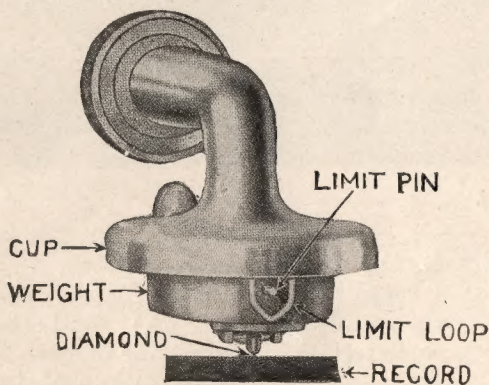


Fig. 2

ASSEMBLING REPRODUCER TO PHONOGRAPH

- (a) After removing the cardboard packing found between the Reproducer cup (Fig. 2) and the weight (Fig. 2).
- (b) See that the slot in the Reproducer locking ring (A, Fig. 3) is in line with the corresponding slot in the end of the horn.
- (c) Hold the Reproducer locking ring firmly with the left hand as shown in Fig. 4, push Reproducer into its socket with the right hand so that the locking pin (B, Fig. 3) and Reproducer enters the two slots before mentioned.
- (d) Lock Reproducer in place by turning Reproducer locking ring (A) to left until it binds tightly.
- (e) Lower Reproducer gently, as the diamond point, or Record, or both, may be damaged by too sudden impact.
- (f) Do not attempt to move Reproducer across Record when former is down, i. e., in playing position.
- (g) Be careful to move Reproducer to extreme right when putting on, or taking off a Record.
- (h) Always remove Reproducer from horn before removing turn-table from spindle.

REPRODUCER SETTING

1. Figure 2 shows the correct setting of the Reproducer when in playing position. You will note that the "Limit Pin" is located in the centre of the limit loop, at a distance below the "Cup" about equal to its own diameter (of pin).

This location may vary slightly either sidewise or up and down without affecting reproduction.

If, however, the limit pin should become displaced sidewise enough to touch the limit loop it may cause repeating. This can be corrected by raising the Reproducer and again lowering it onto Record.

The limit pin should never touch the cup above it. If adjustment upward or downward should ever become necessary, refer the matter to your dealer.

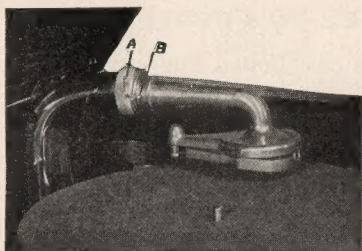


Fig. 3



Fig. 4

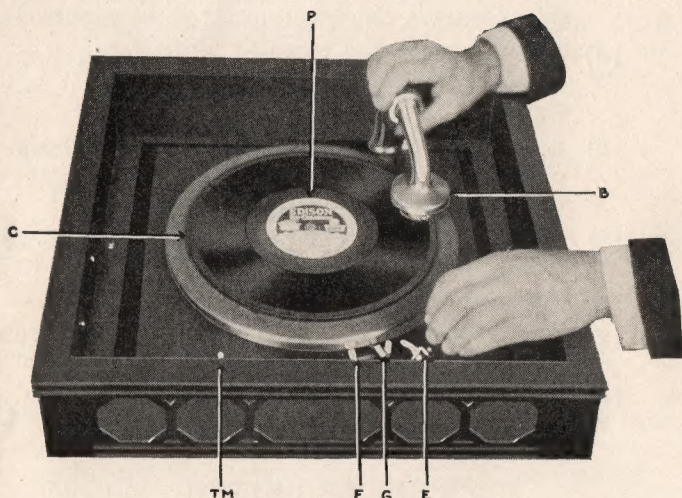


Fig. 5

TO PLAY PHONOGRAPH

1. See that the phonograph is fully wound.
2. Swing Reproducer (B) to extreme right.
3. Place the Record (C) on the turn-table.
4. Start phonograph by pushing starting lever (F) to left.
5. Swing Reproducer to left until the diamond point comes just above the grooved or playing area of the Record.

NOTE—The Reproducer is operated as follows on instruments not equipped with Reproducer Locating Device:

6. Lower Reproducer onto the Record by raising the operating handle (E) to vertical position with the left hand, while guiding the Reproducer with the right hand as shown in Fig. 5.

7. To prevent tarnishing the polished neck of the horn, hold the horn by the locking ring when guiding the Reproducer to the starting position.

8. When the selection is finished, raise the Reproducer by means of the operating handle and stop the phonograph by pushing brake lever (G) to left.

9. To play another selection, rewind the phonograph and repeat the above instructions.

NOTE—Certain models are equipped with Reproducer Locating Device.

INSTRUCTIONS FOR OPERATING REPRODUCER LOCATING DEVICE

This device is to be used for placing Reproducer in position for playing either 10 or 12-inch Records.

When a 10-inch Record is used, first start motor; then place finger of left hand on numeral 10, push it down as far as it will go and hold it there. Then with right hand on lift lever (E) swing the reproducer to the left until it stops, then raise lift lever and release finger from the numeral.

Do not release finger from numeral until Reproducer is in contact with Record.

The same procedure is used on 12-inch Records, except that numeral 12 is used.

WINDING PHONOGRAPH

NOTE—Rewinding after each selection is not necessary, but it will generally be found more convenient than to allow the phonograph to run down completely before rewinding.

SAFETY STOP ADJUSTMENT

1. The Safety Stop is carefully set and tested in the factory and should permit of playing the longest selections. However, it should not allow the phonograph to run until the diamond point of Reproducer reaches the label (P, Fig. 5) in centre of Record.

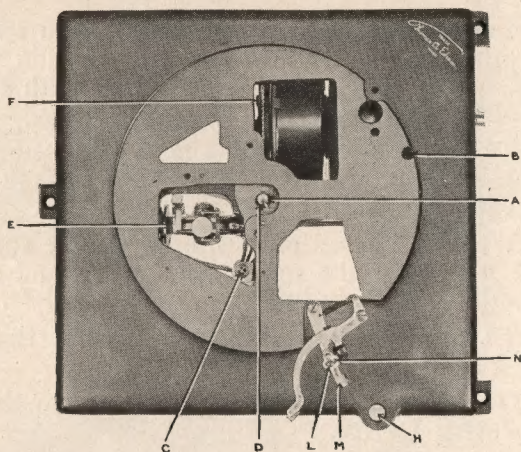


Fig. 6

2. Should the Safety Stop operate too soon (in long selections) or too late, as just described, it should be adjusted as follows:

(Fig. 6)

- (a) Remove Reproducer from horn.
- (b) Take off the turn-table.
- (c) Loosen set screw (L) slightly, i. e., enough to allow the arm (M) to be turned at (N) by hand.
- (d) Replace the turn-table and Reproducer.
- (e) To make Safety Stop operate later, turn arm (M) slightly to the left; to make it operate earlier, turn arm slightly to the right.
- (f) Continue this adjustment until the phonograph stops with the diamond point of the Reproducer just at the outer circumference (P, Fig. 5) of the label on the Record.
- (g) When proper adjustment is attained, again remove Reproducer and turn-table, as above, and tighten set screw (L, Fig. 6).
- (h) Replace turn-table and Reproducer.

NOTE—The Safety Stop is thus adjusted to stop on all selections at the same point. Therefore depending upon the length of the selection, the time which elapses

between the end of the selection and the stopping of the phonograph will vary. However, it will not injure the diamond point of Reproducer to run over the smooth surface of the Record.

SPEED ADJUSTMENT

All Edison Diamond Disc Records should be played at turn-table speed of eighty (80) turns per minute. Accordingly, each instrument is carefully adjusted to run at this speed before it leaves the factory; your dealer will adjust the speed if necessary when installing the phonograph.

CARE OF PHONOGRAPH

A clean and properly lubricated mechanism eliminates many petty annoyances and insures the proper operation of your phonograph. It is therefore essential that you give particular attention to the following instructions:

OILING

The lubricants for use with Edison Phonographs are most carefully selected and owners of Edison Phonographs should use only Edison Oil on bearings and Edison Grease on gears and worms. The use of inferior or unsuitable lubricants invariably results in improper operation with its attendant dissatisfaction. Samples of both Edison Oil and Edison Grease are supplied with each instrument. Graphite main spring lubricant in tubes may be purchased from the dealer, when needed. Future supplies may be obtained from your dealer.

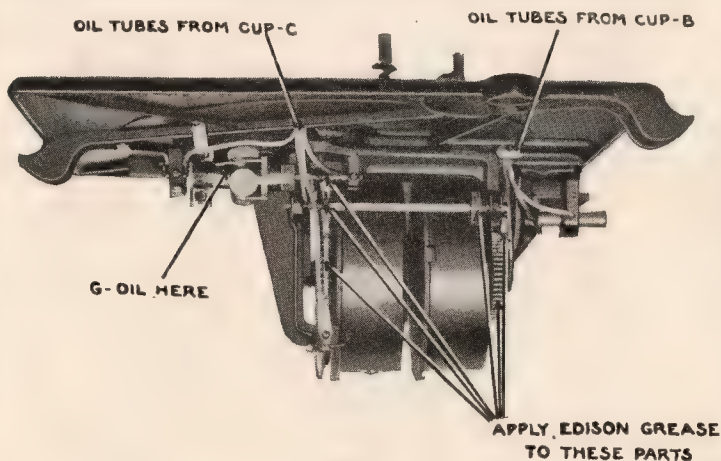


Fig. 7

To oil phonograph, proceed as follows:

See (Fig. 6).

NOTE—To stop spindle (A) from turning when turn-table is removed to oil the mechanism, place a wedge of paper between spindle (A) and the motor plate.

CAUTION—Do not fail to remove this wedge before replacing the turn-table.

- (a) Remove turn-table, first removing Reproducer to avoid damage from striking.

Apply Edison Oil at the following points:

B (Fig. 6) Oil cup (fill with oil).

C (Fig. 6) Oil cup (fill with oil).

D (Fig. 6) Upper spindle bearing (oil freely).

E (Fig. 6) Governor frictions (1 or 2 drops on each).

F (Fig. 6) Oil tube to spring sleeve (oil freely). Right hand spring barrel in double spring motor has an oil tube in the spring sleeve.

NOTE—If the frictions (E) or the polished friction disc appear to be gummy or sticky, clean both with a few drops of gasoline before applying oil.

G (Fig. 7) Governor sleeve (2 or 3 drops).

H (Fig. 6) Operating handle bearing (3 or 4 drops).

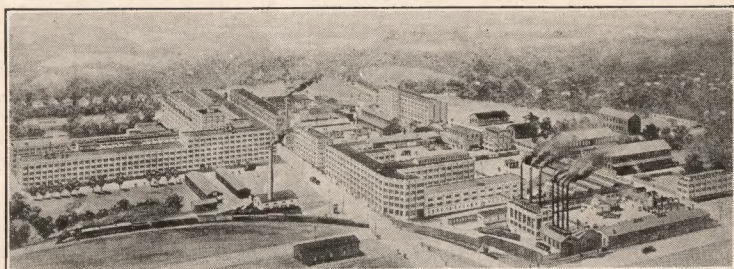
J (Fig. 1) Horn pivot bearing (5 drops).

- (k) The oil tubes from cups B and C occasionally become clogged with dust; it is therefore well to note whether the oil inserted in oil cups reaches the various points to which oil tubes run. If oil does not reach these points the tubes should be cleaned out with a small piece of fine wire. But be careful not to remove the small felt wicks at ends of tubes. These prevent the oil from running too quickly and therefore cause the oil supply to last a much longer time than it would if they were removed.

- (l) Apply Edison Grease freely to those parts indicated in Fig. 7.

- (m) Do not put oil or grease on either the Diamond Point or the Record.
- (n) Do not put oil or grease in the Spring Barrel. Your dealer is supplied with the proper lubricating mixture and should be requested to attend to this when attention is necessary. If this is not convenient be sure to obtain from him the proper lubricant and instructions dealing especially with this subject, or write Factory for detailed instructions.

No set rule can be laid down as to how often your phonograph should be oiled and greased as above. In each case it depends upon the amount of use a phonograph receives and the temperature conditions of its location. For ordinary home use in a moderately heated room the phonograph should be oiled about once a month.



EDISON LABORATORIES
ORANGE, N. J.



